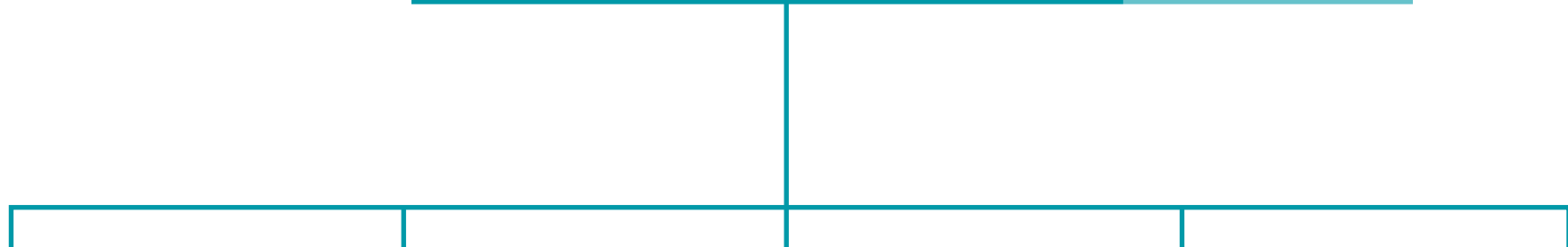


Corporate leadership team (CLT)

	<p>Chief executive officer Laura McGillivray</p>
	<p>e: lauramcgillivray@norwich.gov.uk t: 212001</p>

<p>Executive assistant Julie Gibbons t: 212001</p>



	<p>Executive head of business relationship management and democracy Anton Bull</p>
<p>e: anthonybull@norwich.gov.uk t: 212326</p>	
<p>Executive assistant Emma Webster t: 212526 (Mon and Wed)</p>	

	<p>Executive head of customers, communications and culture Nikki Rotsos</p>
<p>e: nikkirotsos@norwich.gov.uk t: 212211</p>	
<p>Executive assistant Debbie Manning t: 212012 (Tue to Thu)</p>	

	<p>Executive head of strategy, people and neighbourhoods Russell O'Keefe</p>
<p>e: russello'keefe@norwich.gov.uk t: 212908</p>	
<p>Executive assistant Hannah Jones t: 212166 (Mon, Wed and Thu)</p>	

	<p>Executive head of regeneration and development Currently vacant</p>
<p>Executive assistant Jane Ives t: 212226</p>	

	<p>Chief finance officer (Section 151 Officer) Justine Hartley</p>
<p>e: justinehartley@norwich.gov.uk t: 212440</p>	
<p>Management support assistant Dee Solomon or Joy Waters t: 212215</p>	

Strategy, people and neighbourhoods

Executive head of strategy people and neighbourhoods
Russell O'Keefe



Business relationship management

Executive head of business relationship management and democracy
Anton Bull



Customers, communications and culture

Executive head of customers, communications and culture
Nikki Rotsos



Regeneration and development

